



**SECURED
ENTRANCES
WORLDWIDE**

info@tansa.com.tr
www.tansa.com.tr



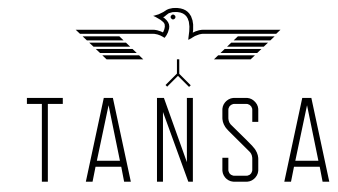
Altan Akcayli
Mechanical Engineer M.Sc. / Chairman of Board

Tansa was established in 1962 for the purpose of manufacturing precision gears and automations for machinery, chemistry, electric meter factories and gas industries. As a result of the capabilities developed for manufacturing sensitive mechanical components, the company invested further in to precision machinery and with the increased number and qualification of its engineers, started manufacturing timers for washing machines and dish washers at first, and later started to manufacture all in house designed automated mechanical wall pendulum and table clocks.

Boosting its machine park with a million dollars investment early 1980, Tansa was now 2nd large factory worldwide that manufactured clocks. When the company participated in clock industry exhibition in Switzerland, teachers and students of clock making school visited the company's stand, asking in astonishment: "do Turks manufacture clocks too"? Afterwards Tansa began exporting mechanical pendulum clocks to Switzerland as well. When the Quartz technology developed through the end of 1980s mechanical wall clock industry collapsed worldwide and Tansa started to manufacture products for security industry; watchman clocks and turnstiles.

Security Industry demanded from Tansa reliable turnstiles that could operate many years without compromise from performance. After observing the needs and requirements of the industry, Tansa designed and manufactured a functional, easy to install and service turnstile mechanism that would meet the security industry demands. The design for the Tansa turnstile mechanism was completed prior to investigating any other manufacturers model to prevent repeat of others problems. Tansa preferred this approach relying on their fine mechanics background and knowing that a turnstile mechanism is simpler and does not require the extreme fine precision comparing to construction of a mechanical clock.

Today, our turnstiles operates like a clockwork and installed worldwide. Their operational mechanics does not resemble any other manufacturers, while delivering precision functionality provide the dealers and integrators with simpler service and installation. Manufacturing of our mechanisms is a bit harder. Coming from a tradition that operates on one fifty of thousand of a millimeter, Tansa is able to easily match any quality standard with classical and CNC machines, equipped with modern technology. I often tell our master craftsmen that they can't be master craftsmen unless they apply this precision to cheese cutting while they're having breakfast at home.





SECURED ENTRANCES WORLDWIDE

Tansa Turnstile's high quality products are preferred worldwide. We participate in many security industry exhibitions all around the world to grow our dealers network every year.



► SG 112 ◀



► SG 212 ◀



► SG 312 ◀



► SG WMC ◀



► SG WS/WL/WE ◀



► SG 343 ◀



SWING GATE TURNSTILES

Swing Gate Turnstiles are designed for the pedestrian and handicapped passages.



TANSA
SINCE 1962



► LTF 104 ◀



► LTF 104 D ◀



► LTF 113 ◀



► LTF 113 D ◀



► LTF 114 ◀



► LTF 114 D ◀



► LTF 114 ST ◀



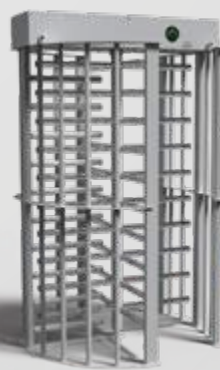
► LTF 114 STD ◀



► LTF 213 ◀



► LTF 213 D ◀



► LTF 214 ◀



► LTF 214 D ◀



► LTF 413 ◀



► LTF 413 D ◀



► LTF 413 SG ◀



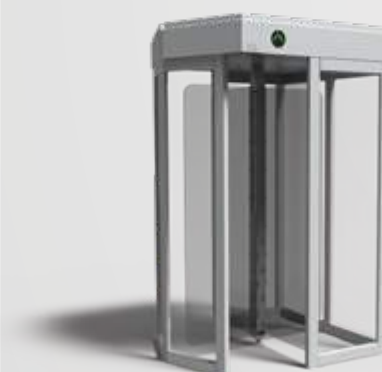
► LTF 414 ◀



► LTF 414 D ◀



► LTF 513 ◀



► LTF 514 ◀



► LTF 600 ◀

TANSA
SINCE 1962



FULL HEIGHT TURNSTILES

Full Height Turnstiles are designed to be used for both indoor and outdoor applications. They are used where higher security is needed such as stadiums, borders, prisons and custody houses. All the models could be configured with 2, 3 or 4 winged with straight or U shaped bars.



▶ LTOP 101 ◀



▶ LTOP 101 H ◀



▶ LTOP 111 ◀



▶ LTOP 201 ◀



▶ LTOP 301 ◀



▶ LTOP 111 H ◀



▶ LTOP 401 ◀



▶ LTOP 501 ◀



▶ LTOP 501 H ◀



▶ LTOP 551 ◀



▶ LTOP 551 H ◀



SPEED GATE TURNSTILES

Speed Gate Turnstiles are designed for functional and elegant entrances. Our model's different finish options enable architects and interior decorators to apply to various designs for indoor use.



TANSA
SINCE 1962



► LTT 303 ◀



► LTT 303 D ◀



► LTT 303 A ◀



► LTT 303 AD ◀



► LTT 303 S ◀



► LTT 303 AS ◀



► LTT 303 E ◀



► LTT 323 ◀



► LTT 323 D ◀



► LTT 303 J ◀



► LTT 313 ◀



► LTT 313 D ◀



► LTT 313 E ◀



► LTT 313 ED ◀



► LTT 313 EJ ◀

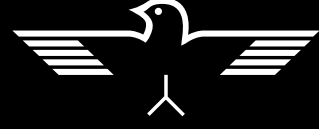


► LTT 313 EJD ◀

TANSA
SINCE 1962

TRIPOD TURNSTILES

Tripod Turnstiles can be used in different applications and purposes since they have been designed and manufactured for both outdoor and indoor use. They can be installed at any entrance where practical application is required.



TANSA

SINCE 1962

Head Office and Factory

Eyüp Sultan Mahallesi Hoca Nasreddin Caddesi
No.10 Sancaktepe / İstanbul
P +90 216 561 96 71 - 72 - 73
F +90 216 561 96 74 - 75

Anatolia Regional Branch and Showroom

Tepe Prime Eskişehir Devlet Yolu 9.km Mustafa Kemal Mahallesi
B Blok No.226 Asma Kat No:20 Çankaya / Ankara
P +90 312 287 56 06
F +90 312 287 86 06

